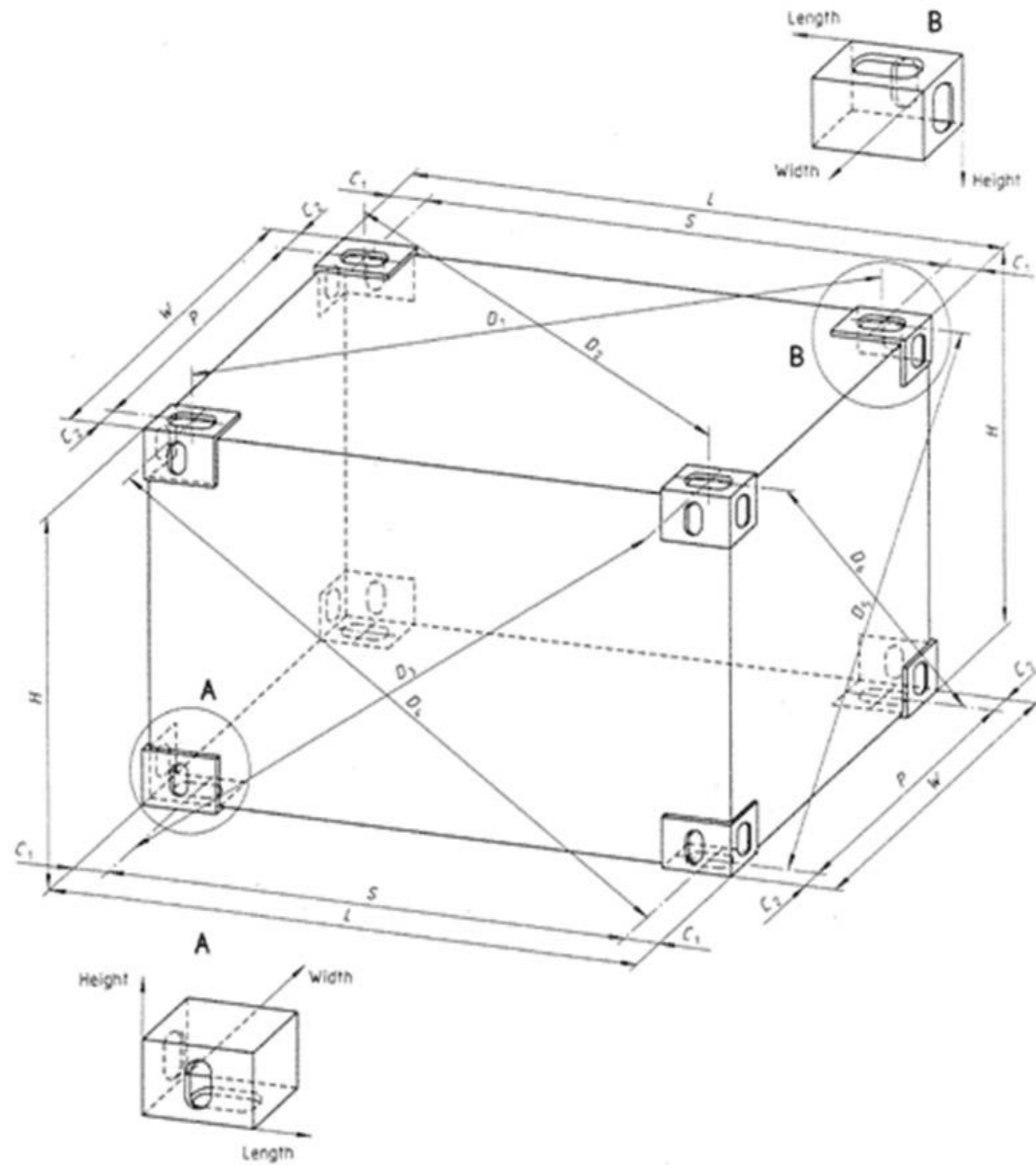


TYPE 1A 20 ' GP DIMENSIONS

[www.shipped.com](http://www.shipped.com)

TECHNICAL DRAWING SERIES 2011

REVISIONS	
MM/DD/YY	REMARKS
1	
2	
3	NOT FOR CONSTRUCTION
4	
5	

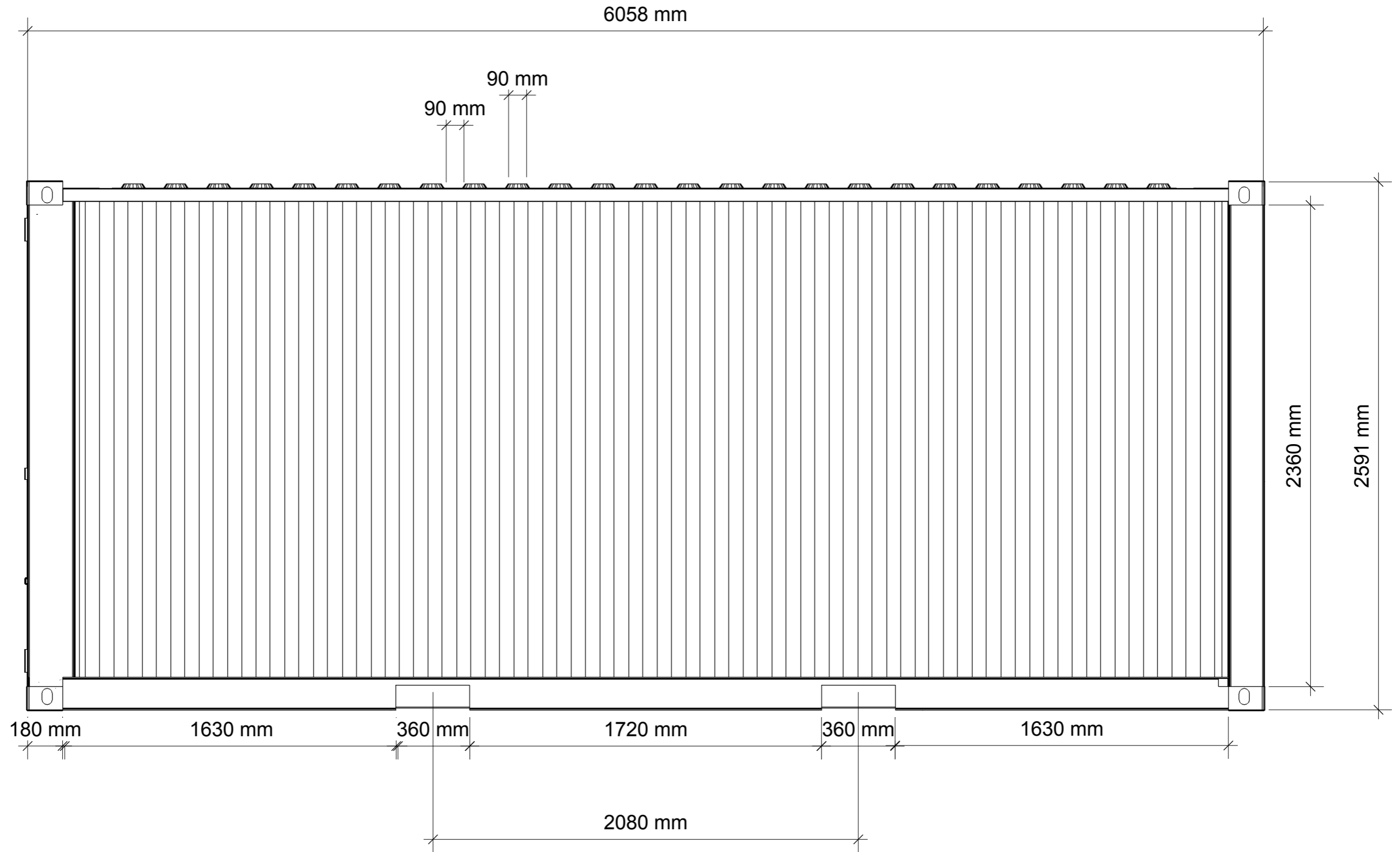


# TYPE 1A OVERALL DIMENSION

[www.shipped.com](http://www.shipped.com)

TECHNICAL DRAWING SERIES 2011

REVISIONS	
MM/DD/YY	REMARKS
1	
2	
3	NOT FOR CONSTRUCTION
4	
5	

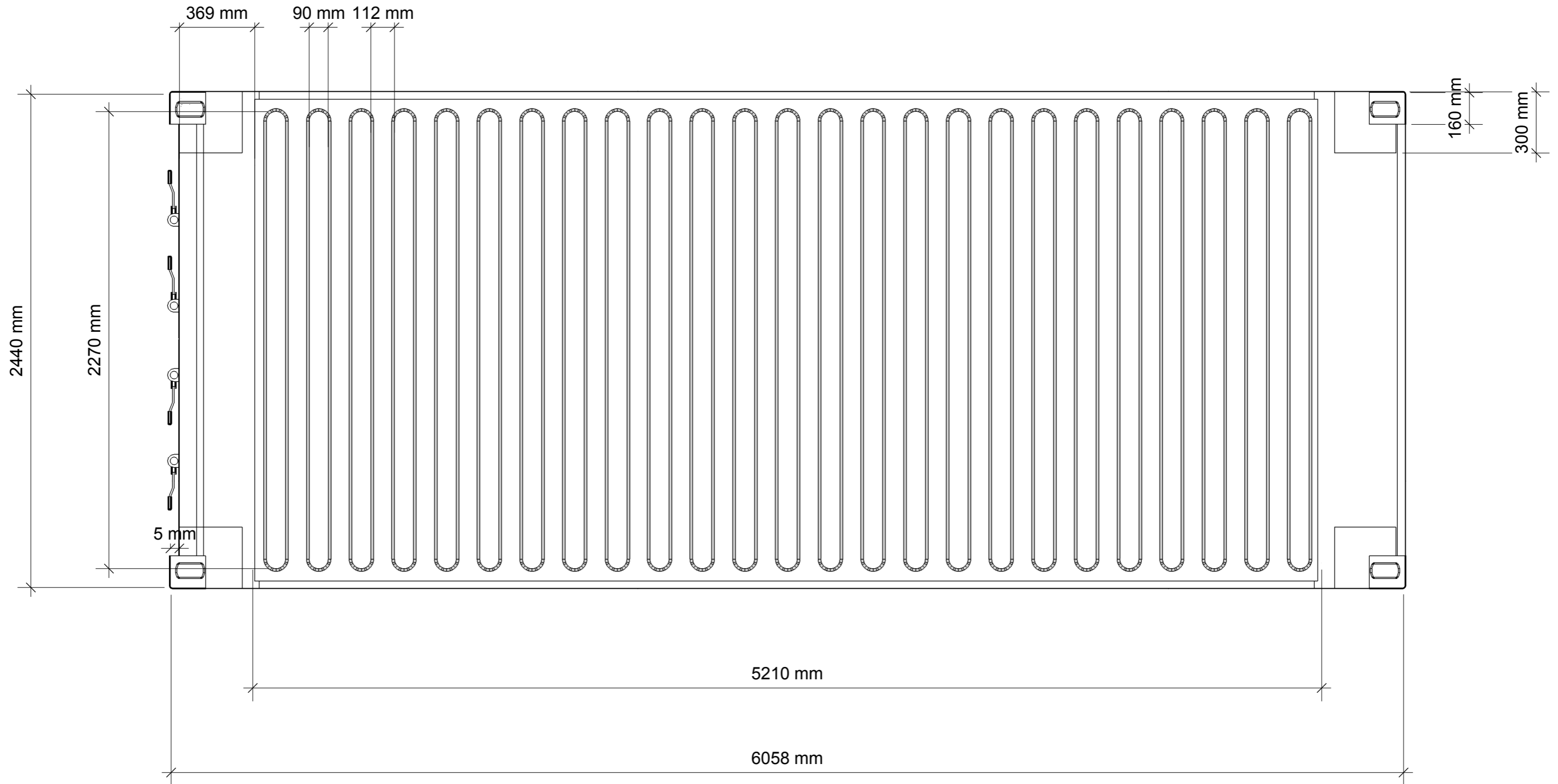


TYPE 1A 20' GP SIDEWALL

[www.shipped.com](http://www.shipped.com)

TECHNICAL DRAWING SERIES 2011

REVISIONS	
MM/DD/YY	REMARKS
1	NOT FOR CONSTRUCTION
2	
3	
4	
5	

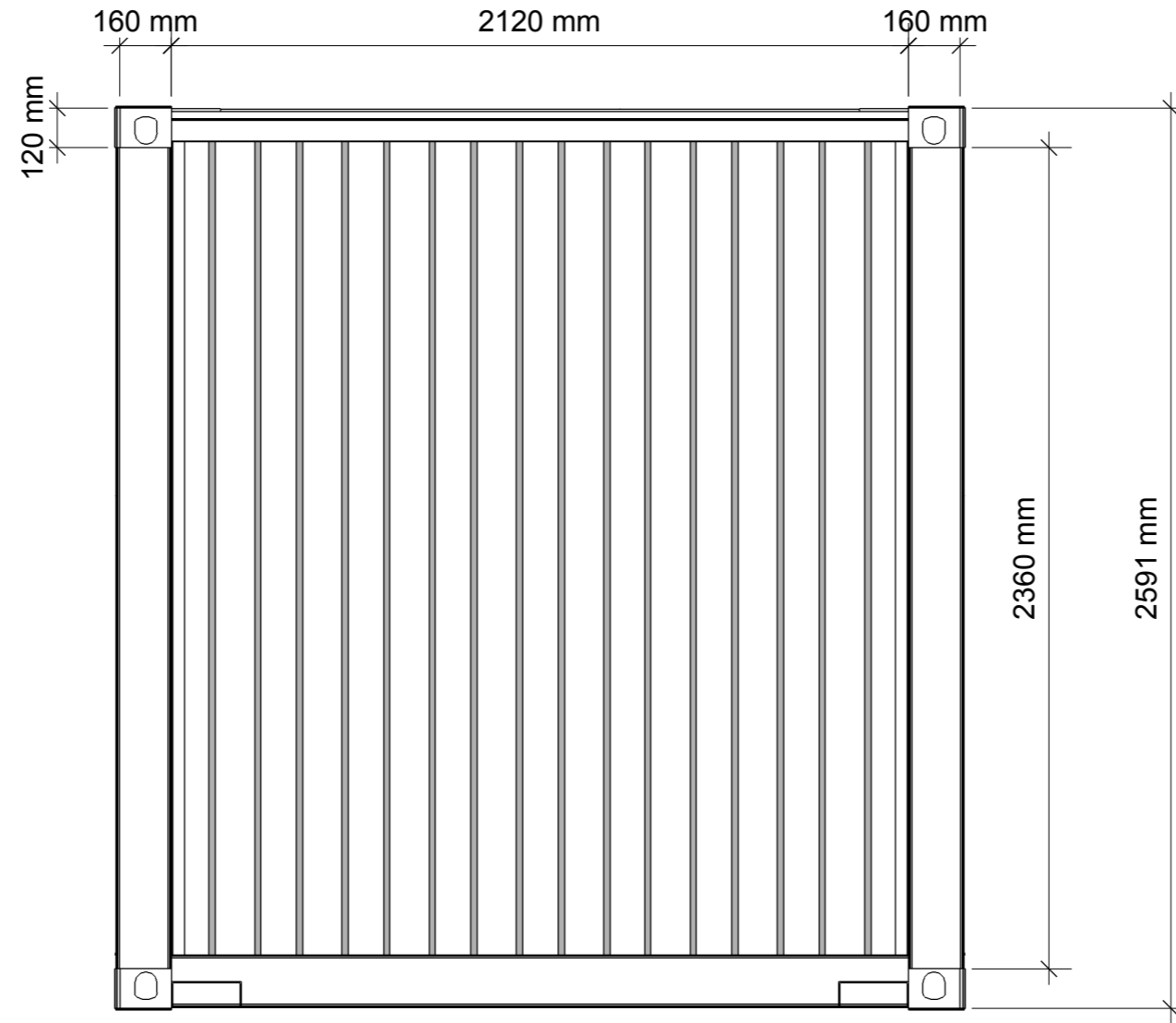


**TYPE 1A 20' GP ROOF**

[www.shipped.com](http://www.shipped.com)

TECHNICAL DRAWING SERIES 2011

REVISIONS	
MM/DD/YY	REMARKS
1	<b>NOT FOR CONSTRUCTION</b>
2	
3	
4	
5	



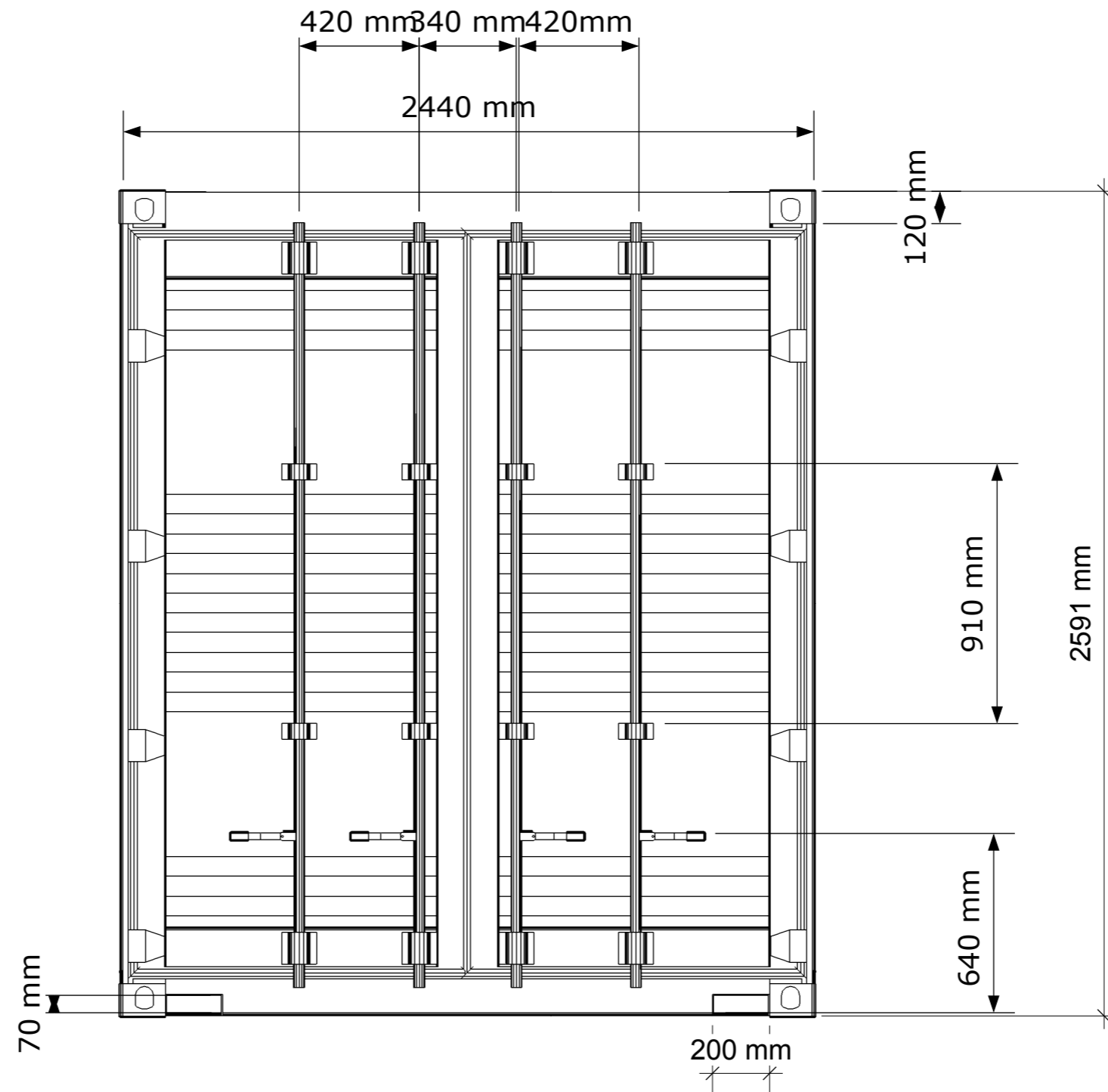
TYPE 1A 20 ' GP END WALL

[www.shipped.com](http://www.shipped.com)

TECHNICAL DRAWING SERIES 2011

REVISIONS	
MM/DD/YY	REMARKS
1	
2	
3	NOT FOR CONSTRUCTION
4	
5	



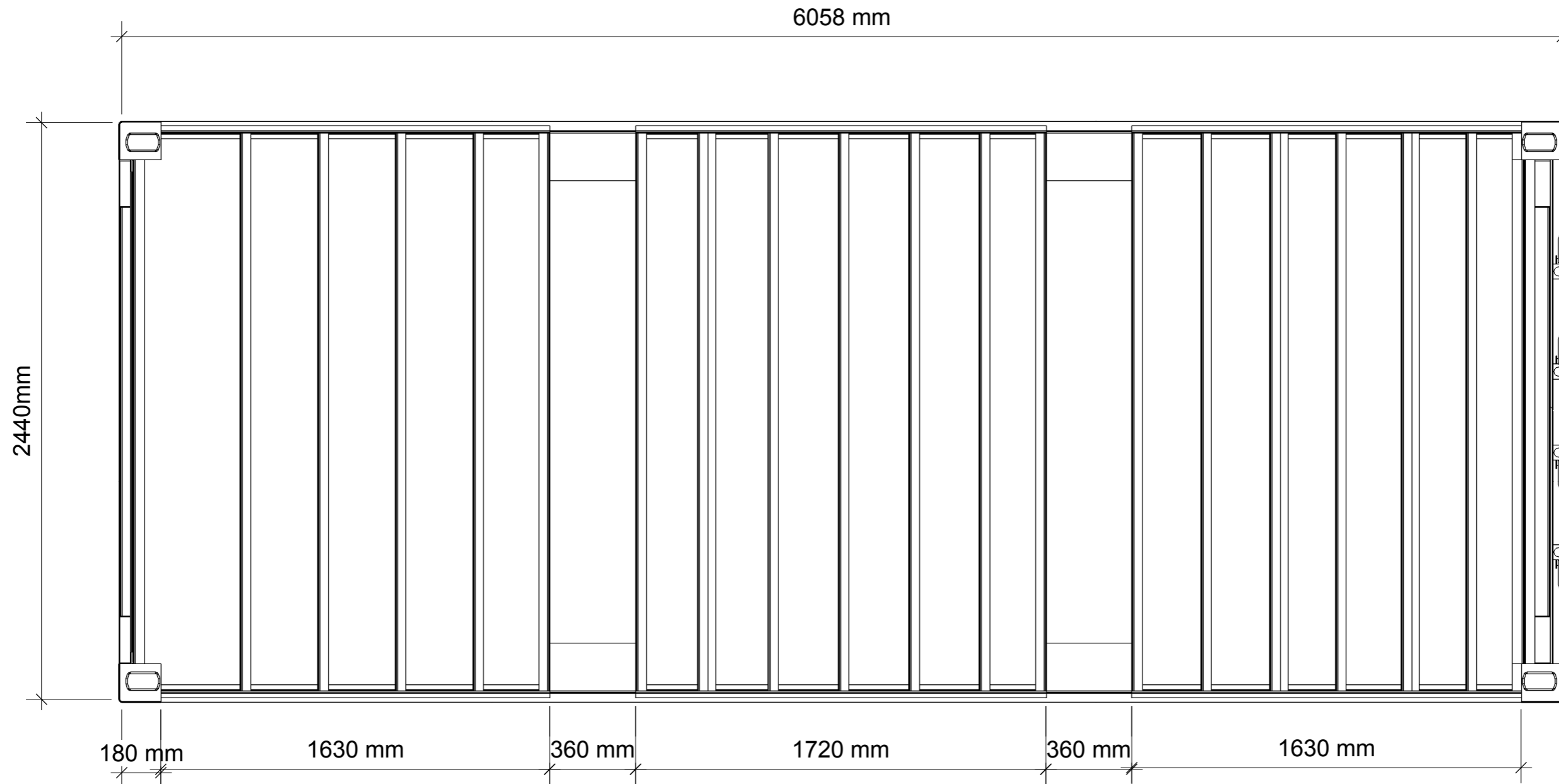


TYPE 1A 20 ' GP DOOR END

[www.shipped.com](http://www.shipped.com)

TECHNICAL DRAWING SERIES 2011

REVISIONS	
MM/DD/YY	REMARKS
1	
2	
3	NOT FOR CONSTRUCTION
4	
5	

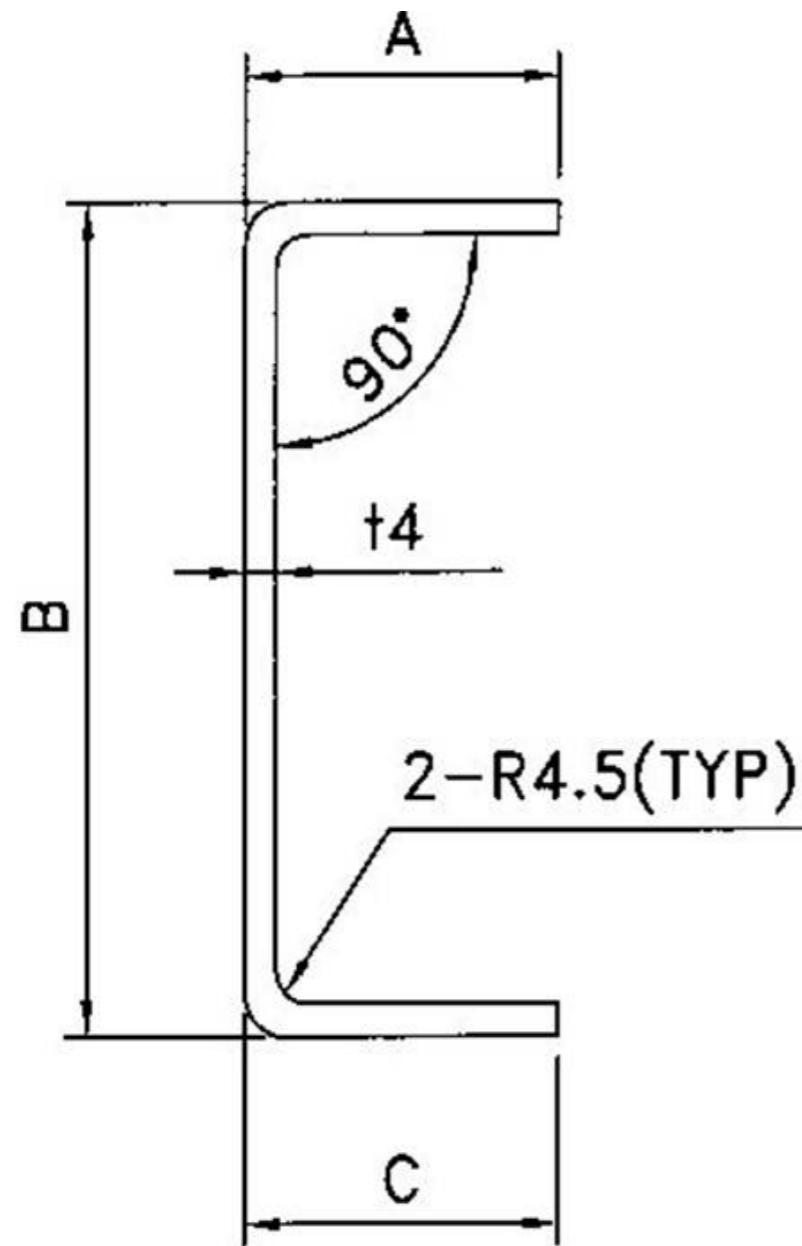


**TYPE 1A 20 ' GP UNDERFLOOR**

[www.shipped.com](http://www.shipped.com)

TECHNICAL DRAWING SERIES 2011

REVISIONS	
MM/DD/YY	REMARKS
1	<b>NOT FOR CONSTRUCTION</b>
2	
3	
4	
5	



## Bottom Side Rail

Each bottom side rail runs the full length of the container and is manufactured from one piece of 4.5 mm pressed steel.

The bottom flanges of the side rails face outwards so as to be easily repaired if they get damaged and making it harder for them to corrode.

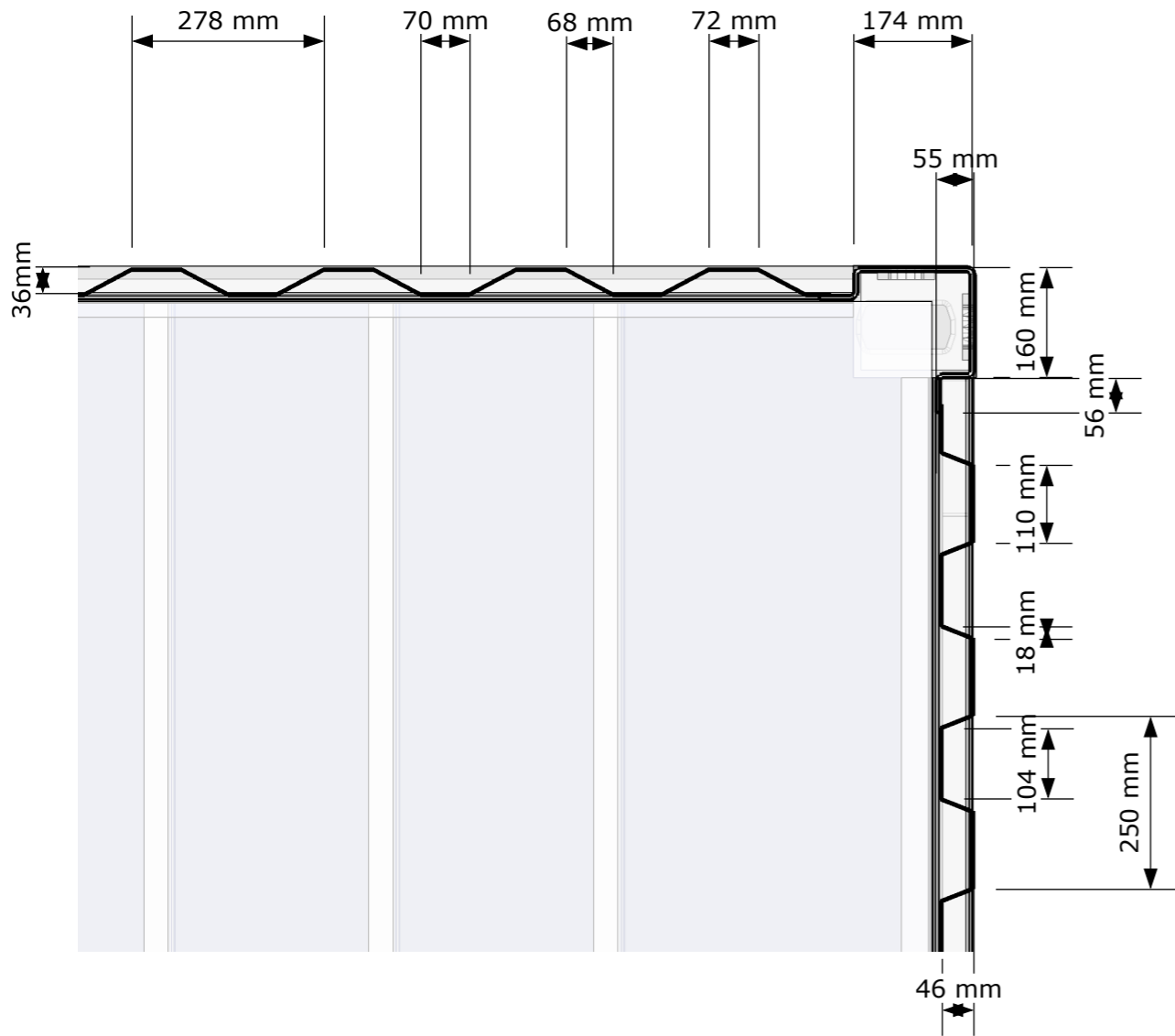
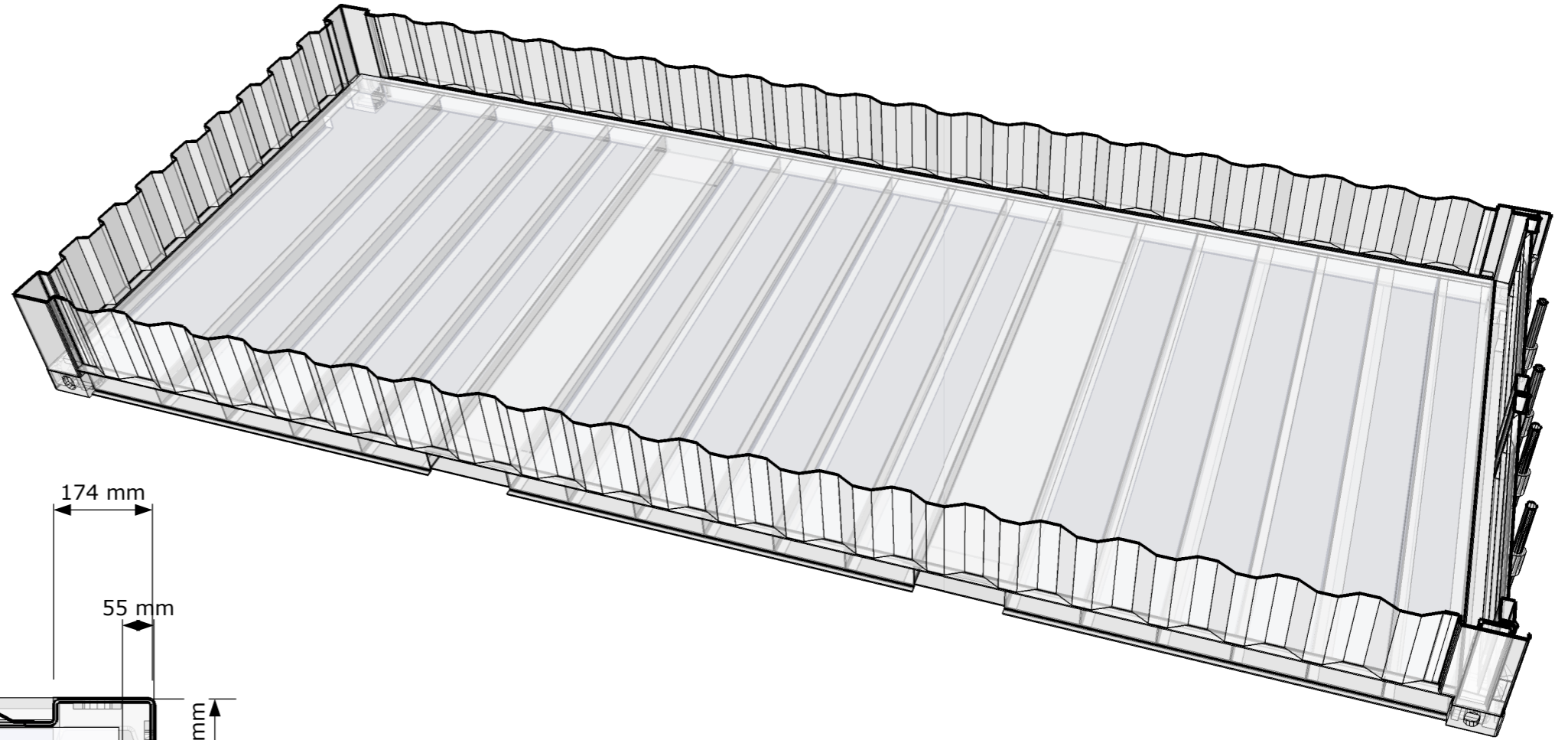
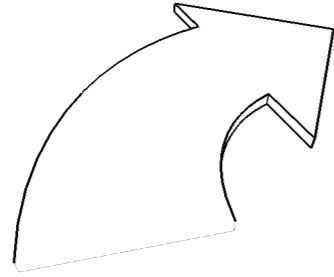
TYPE 1A BOTTOM SIDE RAIL

[www.shipped.com](http://www.shipped.com)

TECHNICAL DRAWING SERIES 2011

REVISIONS	
MM/DD/YY	REMARKS
1	
2	NOT FOR CONSTRUCTION
3	
4	
5	



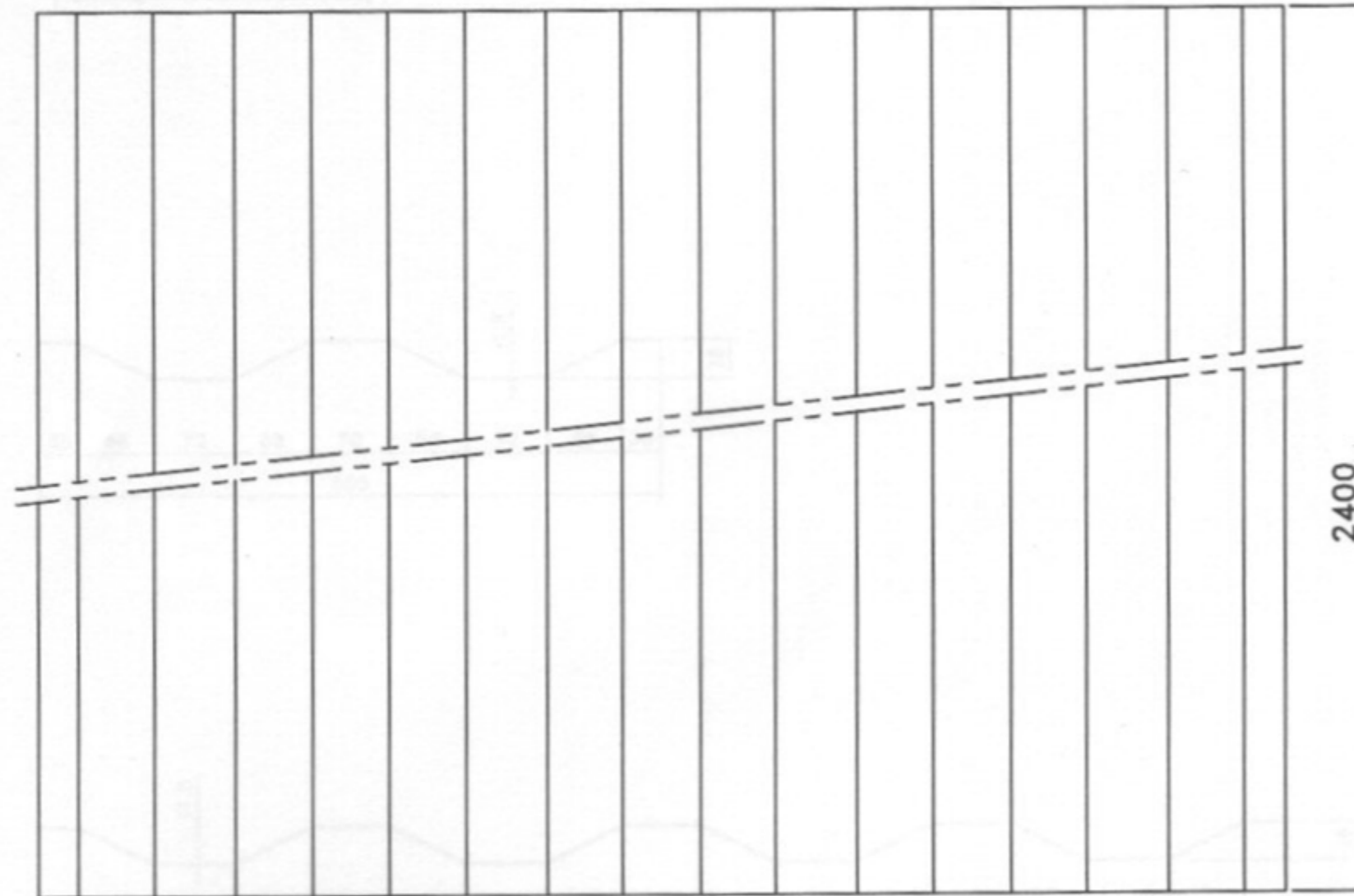
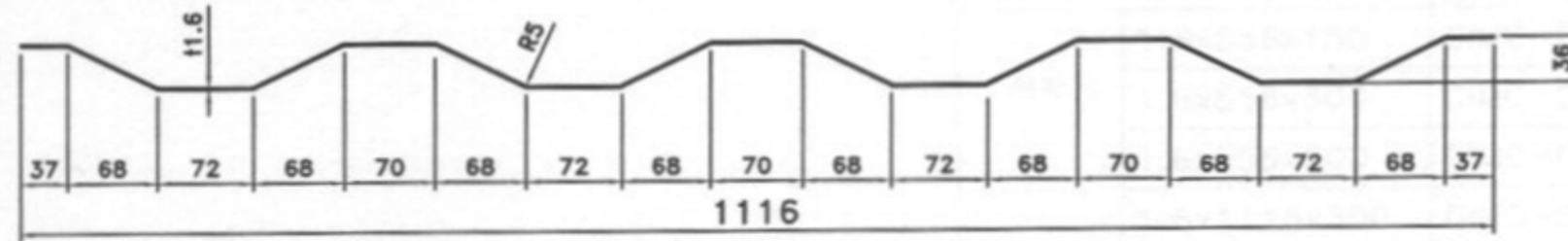


**TYPE 1A 20' GP WALL SECTION**

[www.shipped.com](http://www.shipped.com)

TECHNICAL DRAWING SERIES 2011

REVISIONS	
MM/DD/YY	REMARKS
1	
2	
3	NOT FOR CONSTRUCTION
4	
5	

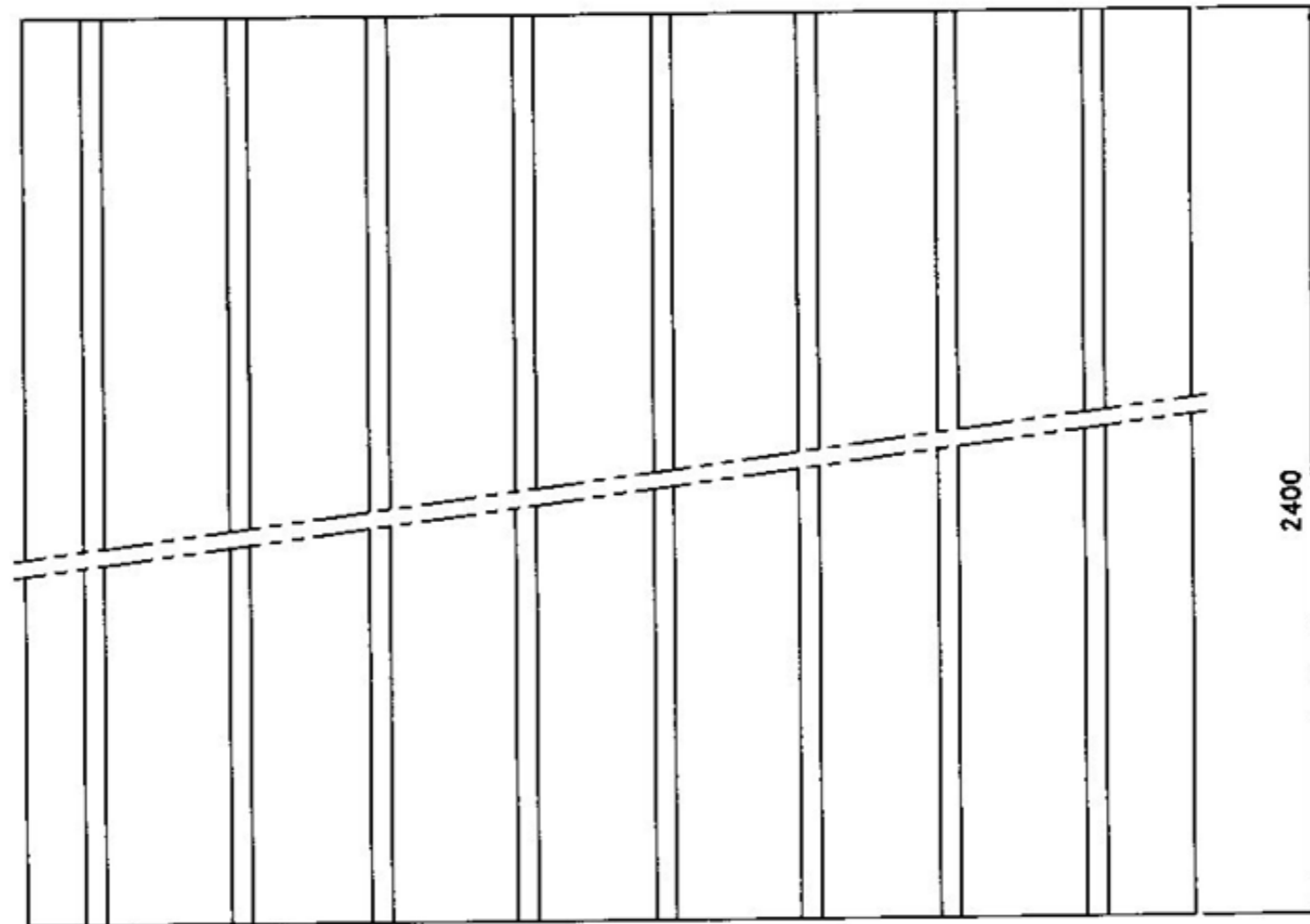
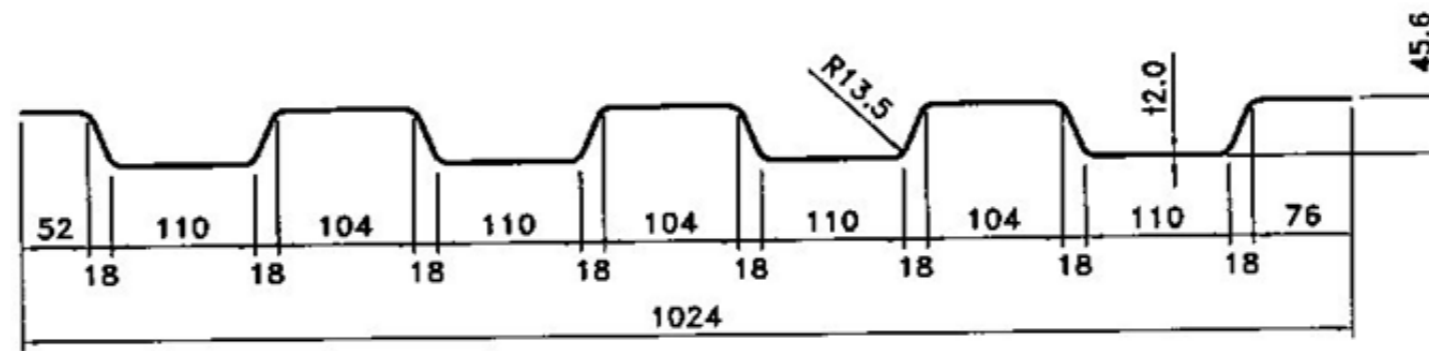


# TYPE 1A SIDE WALL PANELS

[www.shipped.com](http://www.shipped.com)

TECHNICAL DRAWING SERIES 2011

REVISIONS	
MM/DD/YY	REMARKS
1	
2	
3	NOT FOR CONSTRUCTION
4	
5	



TYPE 1A REAR END WALL

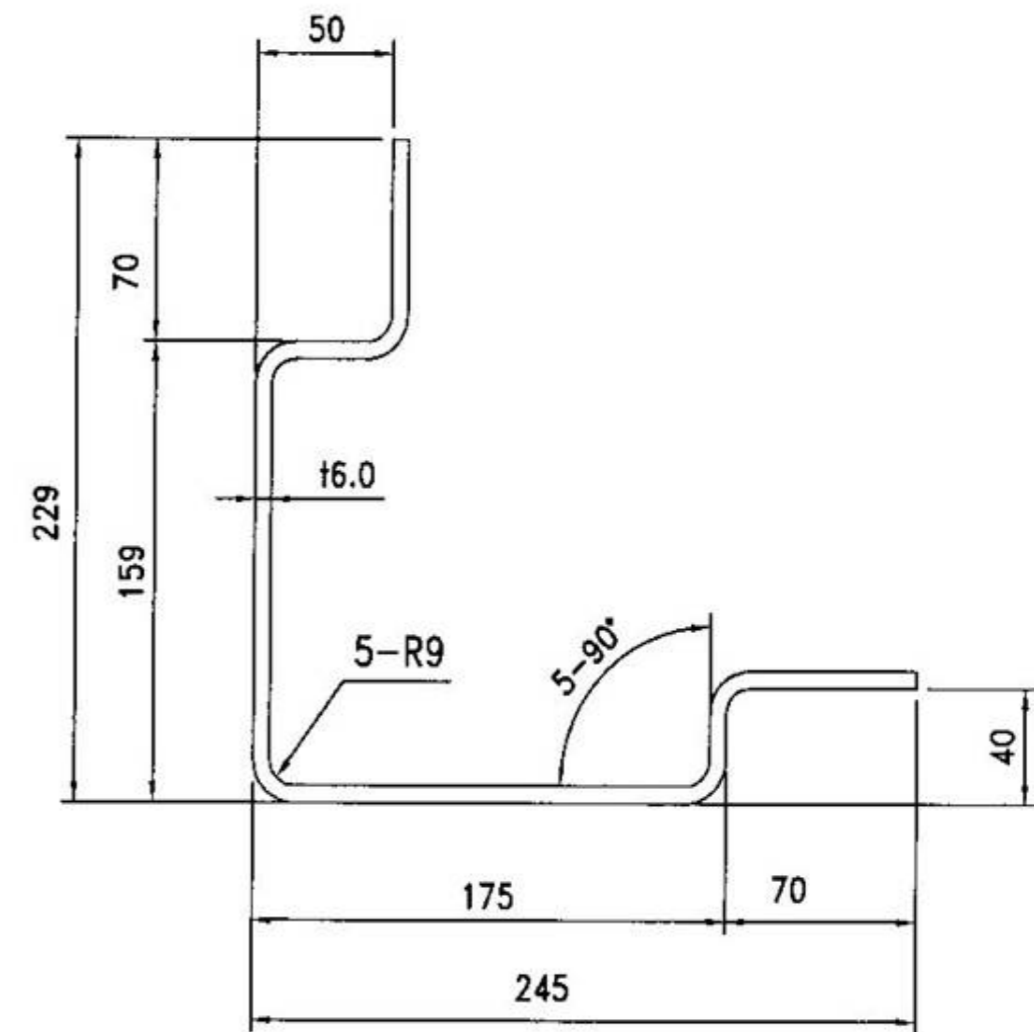
[www.shipped.com](http://www.shipped.com)

TECHNICAL DRAWING SERIES 2011

REVISIONS	
MM/DD/YY	REMARKS
1	
2	
3	NOT FOR CONSTRUCTION
4	
5	



## Rear Corner Post

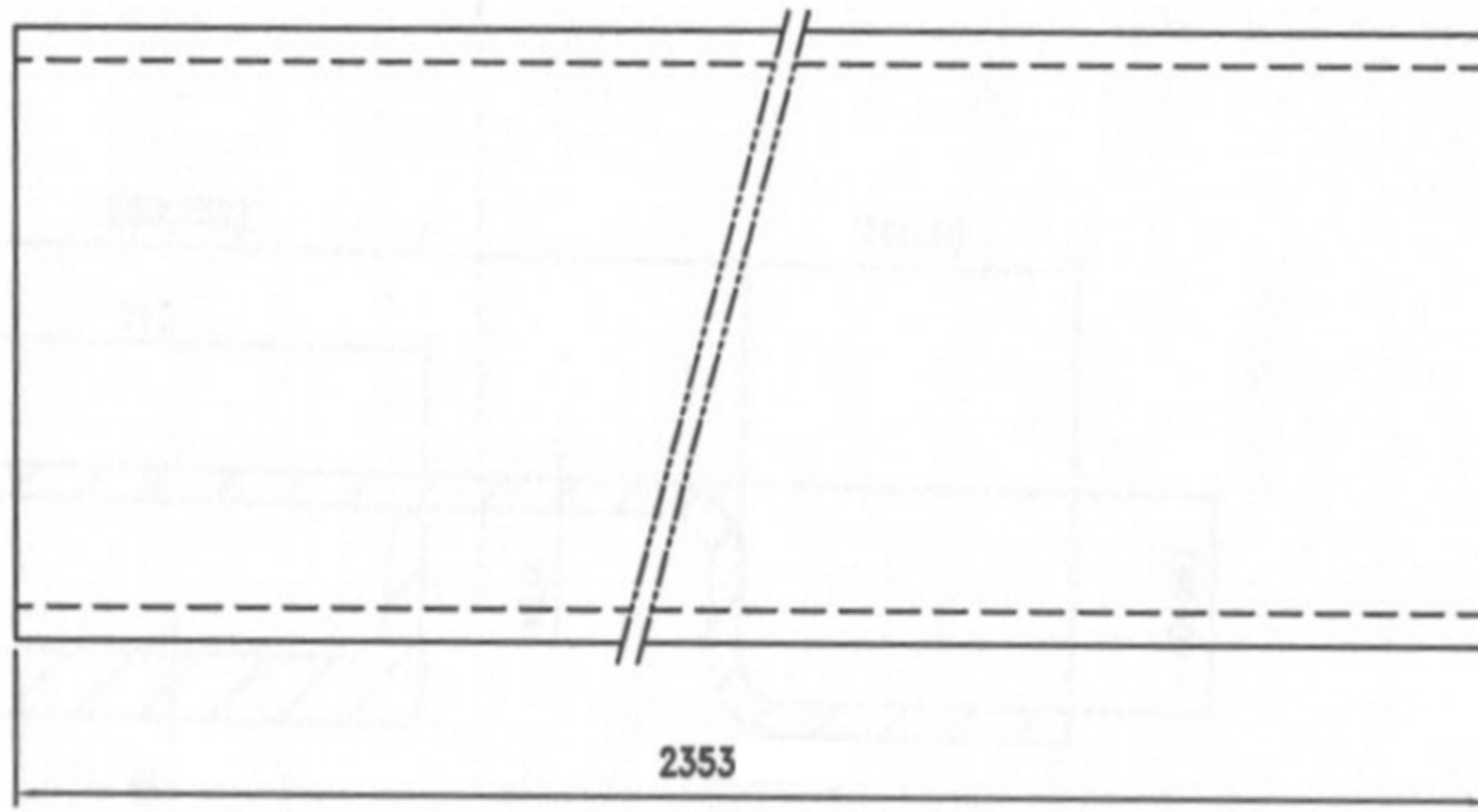
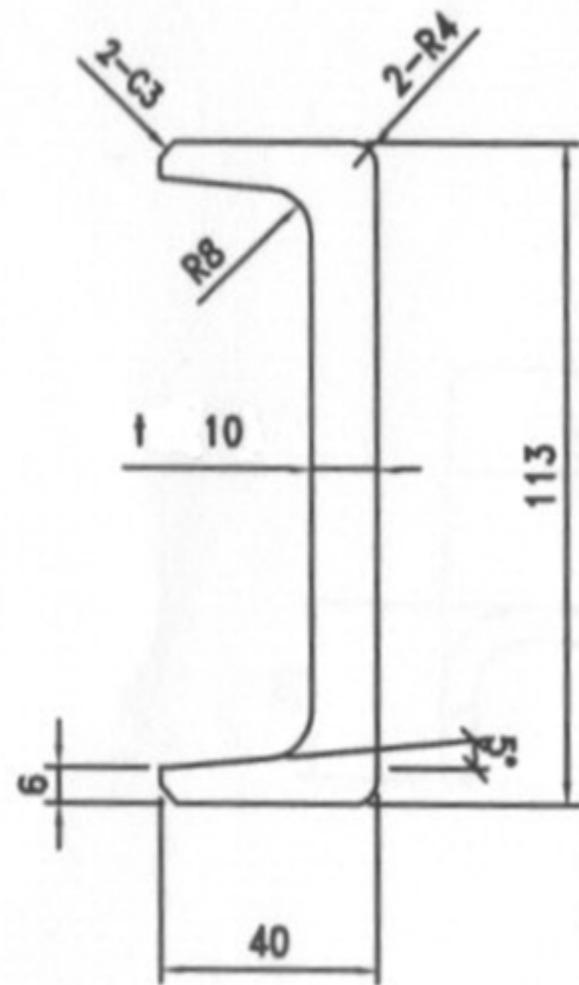


TYPE 1A REAR CORNER POST

[www.shipped.com](http://www.shipped.com)

TECHNICAL DRAWING SERIES 2011

REVISIONS	
MM/DD/YY	REMARKS
1	
2	NOT FOR CONSTRUCTION
3	
4	
5	



REAR CORNER POST INNER

[www.shipped.com](http://www.shipped.com)

TECHNICAL DRAWING SERIES 2011

REVISIONS	
MM/DD/YY	REMARKS
1	
2	NOT FOR CONSTRUCTION
3	
4	
5	



**Container Floors**

**Plywood Sheets**

**Size: 1220 x 2440 x 28 mm**

**Number of Plies: Minimum 19 plies**

**Plywood material: Apitong / Hardwood**

**Screws: M8 x 45 x  $\Phi$ 16 electro zinc plated**

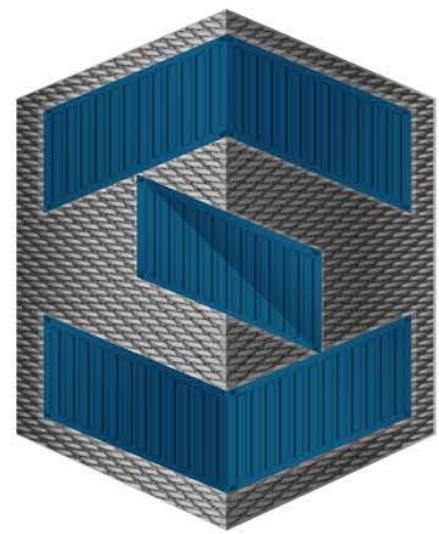
**CONTAINER FLOOR SHEETS**

[www.shipped.com](http://www.shipped.com)

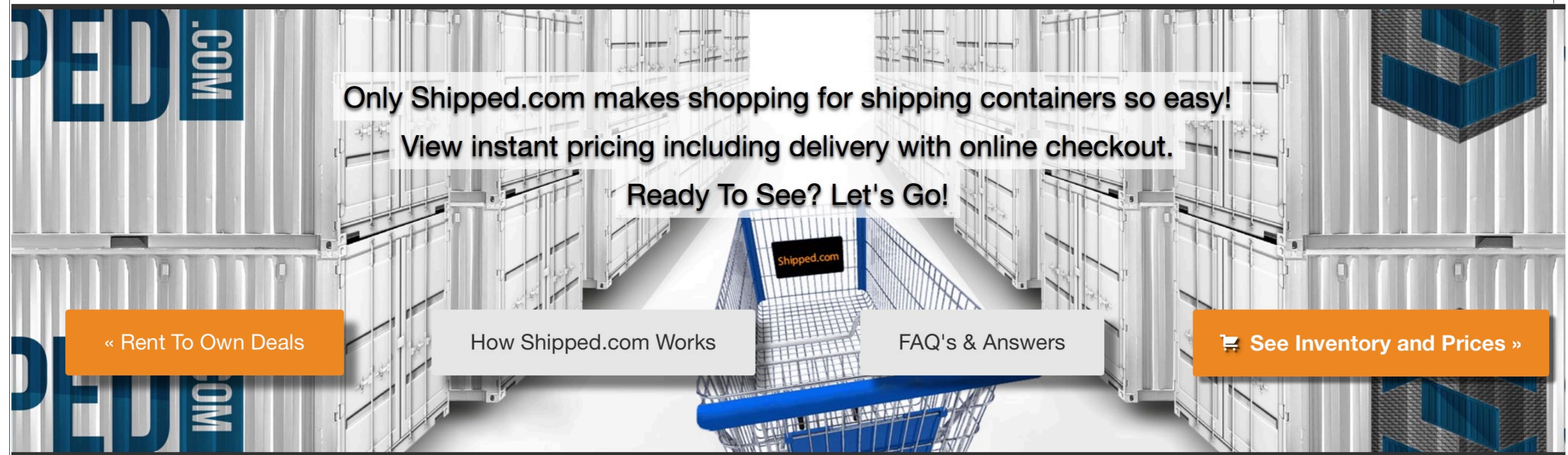
TECHNICAL DRAWING SERIES 2011

REVISIONS	
MM/DD/YY	REMARKS
1	NOT FOR CONSTRUCTION
2	
3	
4	
5	





# SHIPPED.COM



Only Shipped.com makes shopping for shipping containers so easy!

View instant pricing including delivery with online checkout.

Ready To See? Let's Go!

« Rent To Own Deals

How Shipped.com Works

FAQ's & Answers

 See Inventory and Prices »

TYPE 1A 20 ' GP DIMENSIONS

www.shipped.com

TECHNICAL DRAWING SERIES 2011

REVISIONS	
MM/DD/YY	REMARKS
1	
2	
3	NOT FOR CONSTRUCTION
4	
5	